



# ZCC America

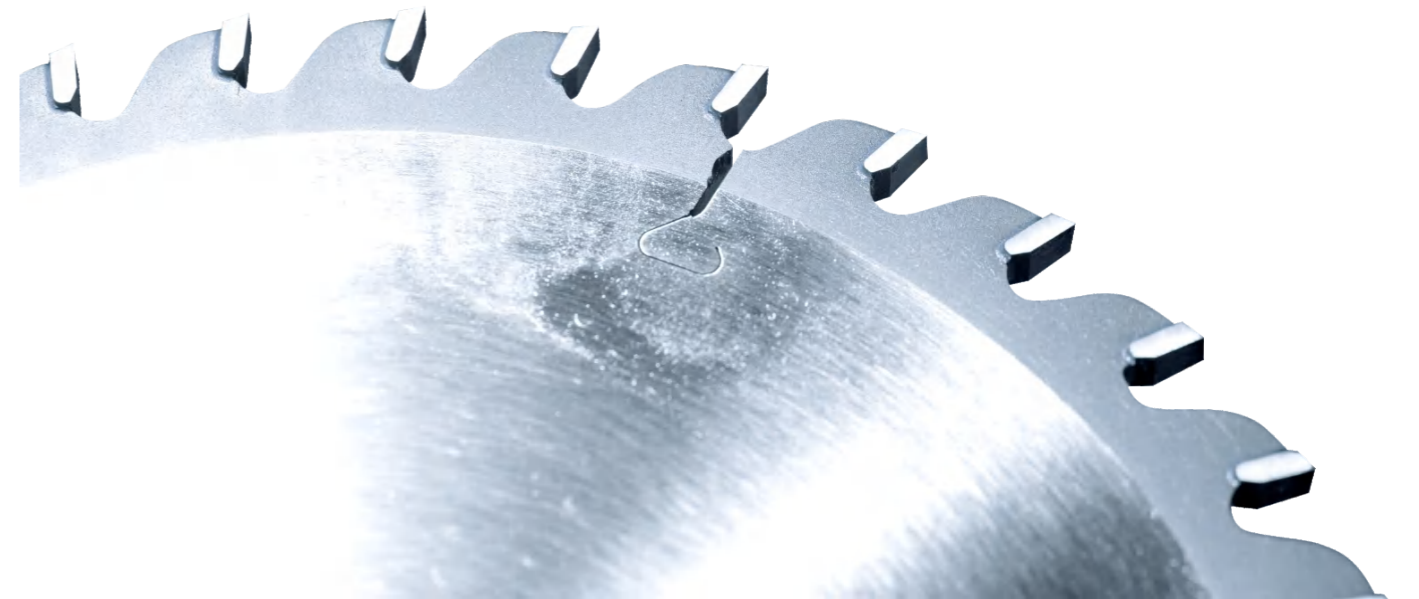
HEADQUARTERS:  
ZHUZHOU CEMENTED CARBIDE GROUP CO., LTD.  
ZHUZHOU CEMENTED CARBIDE WORKS IMPORT & EXPORT CO.

**Zhuzhou Cemented Carbide Works USA Inc.**

ADD: 4651 Platt Lane, Ann Arbor, Michigan  
TEL: 001-734-302-0125  
POST CODE: 48108  
WEBSITE: [www.zccamerica.com](http://www.zccamerica.com)  
EMAIL: [info@zccamerica.com](mailto:info@zccamerica.com)

2024 version

## CARBIDES for wood working



# CONTENT TABLE



ABOUT ZCC	01	<b>XU10W / XF10A</b>	17
PRODUCTION CAPACITY	03	<b>WOOD WORKING ROD</b>	19
R&D	05	<b>WOOD WORKING SAWTOOTH</b>	21
QUALITY ASSURANCE	09	<b>WOOD WORKING GRAVER</b>	23
RODS & BARS PRODUCTS	11	<b>WOOD WORKING STRIP</b>	25
THE RODS FACTORY	11	<b>DISC CUTTER</b>	27
GRADE OVERVIEW / APPLICATION	15		
		<b>APPENDIX</b>	29

# ABOUT ZCC



Zhuzhou Cemented Carbide Group Corporation Ltd. ZCC was one of the 156 major projects that China built in 1954 in its "First Five-Year Plan" , and was known as "the cradle of China's cemented carbide industry" . It is China's largest enterprise specialized in the production,scientific research, sales and export of cemented carbide.

ZCC's main products fall into 6 major categories: metal cutting tools, mining and oil drilling tools, hard materials, tungsten and molybdenum products, tantalum and niobium products, rare metals powder.

They are widely used in industries of metallurgy, machinery, geology, coal, oil and gas, petrochemical, electronics, textile and national defense, etc.

ZCC has established Sales Branches in Germany, USA, India and other countries, and its "Diamond Brand" and "ZCC" trademark has been registered in more than 60 countries and regions, such as Britain, Denmark, South Korea, Australia, Canada, and the products are sold to more than 70 countries and regions in the world.

## 1954

**FOUNDATION**

One of the 156 major projects that China constructed in 1954 in its "First Five-Year Plan"

## 1958

**THE FIRST ROD**

China's 1st piece of ROD was born in ZCC

## 2001

**THE FITST ROD WITH COOLANT HOLES**

China's 1st piece of ROD with coolant holes was born in ZCC

## 2009

**RODS & BARS DIVISION BUILT**

Isolated division for rods only in order to avoid cross contamination

## 2018

**NEW DRILL BLANKS**

New production line and have sold one million pieces

## 2021

**NEWLY BUILT PLANT OF RODS AND BARS DIVISION**

The World's leading manufacturing center for rods and bars

# PRODUCTION CAPACITY

At present, ZCC has 5 professional product divisions, 1 manufacturing plants, 3 research and development centers, 1 analysis and testing center, 5 holding subsidiaries, with all kinds of production and testing equipments. It has the production capacity of the entire cemented carbide system from raw materials powder production, to the finished carbide products production, and then to post production processing, and it is capable of producing and processing various types and shapes of cemented carbide. The annual output of cemented carbide products ranks the first in China.

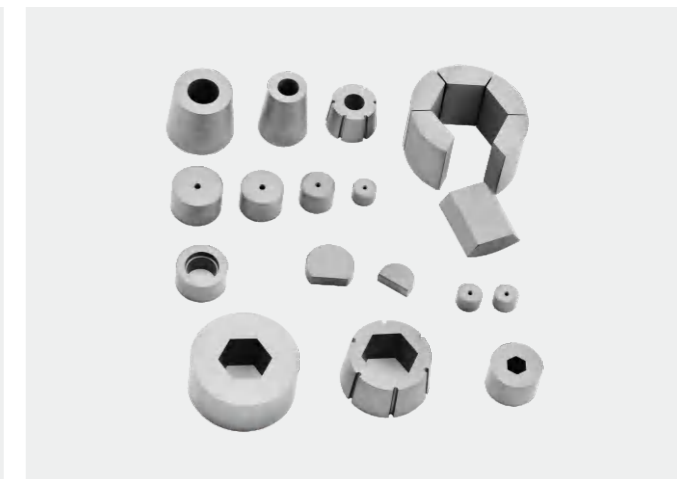
5 PROFESSIONAL PRODUCT DIVISIONS

1 MANUFACTURING PLANTS

3 RESEARCH AND DEVELOPMENT CENTERS

1 ANALYSIS AND TESTING CENTER

5 HOLDING SUBSIDIARIES



# R&D



ZCC adheres to the strategy of "revitalizing enterprise through science and education" and constantly improves its independent innovation ability.

Its hard material R&D center, cutting tool R&D center and micro bit R&D center is of the highest level in China. Since the "11th Five-Year Plan", ZCC has invested nearly 100 million yuan in scientific research every year, and has undertaken more than 20 major scientific and technological projects including national "863" and "973" projects, national innovation capacity construction projects, and national science and technology support projects. With a number of scientific research achievements reaching the international advanced level, ZCC has won more than 40 honors and awards at the provincial level and above. It has nearly 10 national strategic innovative products and key new product projects.

More than 830 authorized patents have been granted, and over 180 national and industrial standards have been established and revised.



ZCC is the presidium unit of China Tungsten Industry Association and the chairman unit of cemented carbide branch. It is the organizer and administrator of the national academic journal **CEMENTED CARBIDE** with great influence and authority in the field of cemented carbide and super hard materials in China, leading the development of cemented carbide industry in China.

ZCC has State Key Laboratory for Cemented Carbide, Nationally Recognized Enterprise Technology Center, Industrial Product Quality Control and Technical Evaluation Laboratory, and Cemented Carbide Quality Inspection Station of China Non-ferrous Metals Industry. It was identified as the national technology innovation demonstration enterprise and the national intellectual property advantage enterprise with the first post-doctoral research station in Hunan province.

# QUALITY ASSURANCE

ZCC always adheres to the quality policy of "Emphasizing Technology, Strict Management, Quality First, and Diamond Brand Products Fully Satisfying Customers' Needs". It has passed the certification in quality, occupational health and safety and environment management. ZCC always adheres to the idea of "Everything for Customer Service", closely focusing on customer needs, constantly expanding technical service efforts, and striving to improve the market service support capabilities.



# THE RODS FACTORY



## Rods & Bars Branch

Rods & Bars Branch is a specialized production unit of cemented carbide rods and bars authorized by ZCC on Nov 12th, 2010. It is a base of ultra-fine cemented carbide that brings together R&D, production, and sales. It has world top technologies regarding cemented carbide and ultra-fine cemented carbide including TAP molding, isostatic pressing and extrusion molding, pressure sintering, etc., as well as high precision extrusion "near net shaping" technique, and complex helical groove shape preforming technique.

Rods and Bars Branch has relatively complete product variety and is able to produce cemented carbide products of nanocrystalline, ultra-fine, submicron crystalline, fine crystalline, etc. Rods and Bars Branch is a stable supplier of PCB rods, solid tool bars, rods with coolant holes, flat bars, among other mainstream products of the industry, and can meet market demand of multiple fields including electronic information, automobile, aerospace, molds, etc. It has been awarded "Science and Technology Prize of China Nonferrous Industry", "National Scientific and Technological Advancement Prize" among other national and provincial awards.

Currently, with 300 professional employees and three specialized workshops, ZCC's rod & bar division is producing about 2000 tons of rods annually and more than one-third are exported to worldwide-famous cutting tool manufacturers.

## New factory founded in Jan. 2021

3000 tons per year capacity (designed)

Semi-automatic production

Stable quality

Automatic storage / pickup warehouse

## 2021 Improvement Data

Production capacity increased 22%

Labor reduced 10%

Customer complaint reduced 30%

WIP reduced 25%

Productivity improved 35%





# GRADE OVERVIEW

Grade	ISO Grade	Co% (wt%)	Grain Size (μm)	Density (g/cm <sup>3</sup> )	Hardness (HV30)	Hardness (HRA)	Fracture toughness (MPa-m <sup>1/2</sup> )	TRS (N/mm <sup>3</sup> )
XF30S	K30-K40	12	0.6	14.12	1680	92.2	10.5	4500
XF20S	K10-K20	10.3	0.6	14.42	1650	92.0	11.5	4500
YL10.2S	K10-K20	10	0.7	14.45	1630	91.9	10.5	4200
XF20T	K10-K20	10	0.6	14.45	1680	92.2	10.2	4200
XU09S	K05-K10	9	0.4	14.40	1950	93.8	8.8	4000
XN208	K05-K10	8	0.2	14.50	2180	94.8	8.3	4500
YU06A	K05-K10	6	0.4	14.70	2100	94.3	8.5	4000
XF10W	K01-K05	6	0.8	14.70	1830	93.2	10.0	2600
XF10A	K01-K05	3	0.6	15.10	2000	94.1	9.0	2600
XU10A	K01-K05	3.0	0.5	15.20	2100	94.4	7.8	2500
XU02	K01-K05	2	0.5	15.35	2180	94.8	8.0	2600

# APPLICATION

Recommended list of wood processing materials								
ZCC Grade	High Density Fiberboard	Middle Density Fiberboard	Flakeboard	Hardwood	Softwood	Winter Wood	Summer Wood	Fine carving
XU02	★★★	★★★	★★★					
XU10W			★★★					
XF10A				★★★	★★★			
XF10W				★	★	★★★	★	
XN208								★★★
YU06A	★	★	★					
XF20S				★	★		★	

The labels: ★ appropriate    ★★ good    ★★★ excellent

Recommended list of wood processing materials	
ZCC Grade	Application Field
XF20T	Suitable for ordinary steel, cast iron, 304 stainless steel material processing.
YL10.2S	Suitable for ordinary steel, cast iron, non-ferrous metal materials processing.
XF30S	Suitable for the processing of ordinary steel, cast iron, die steel materials of above HRC 45.
XU09S	Suitable for the processing of ordinary steel, cast iron, die steel materials of above HRC 53.

# XU10W

## SUITABLE FOR PROCESSING

Flakeboard, Density Board, Multilayer Board, etc.

## CAN BE MADE INTO

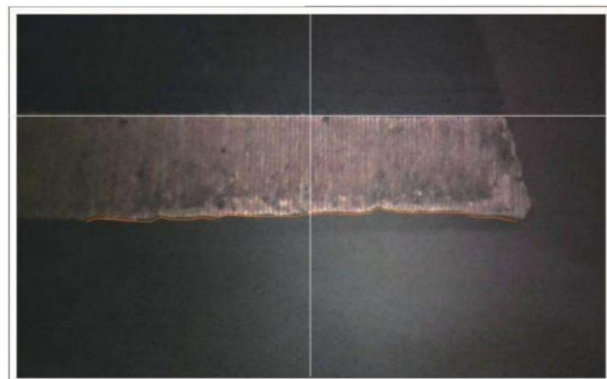
Rod, Sawtooth, Graver and other types.

## NEWLY PROPORTIONATED COMPOSITION OF TRACE ELEMENT

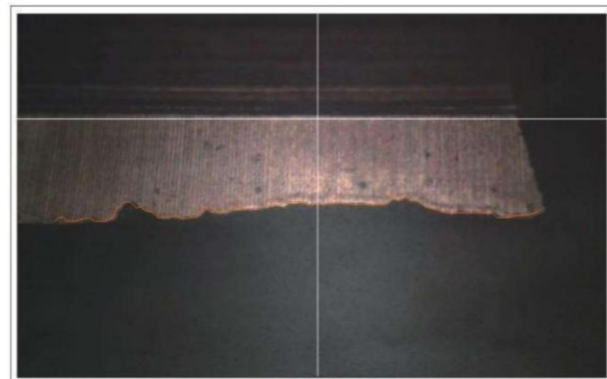
- Ultra high stability, corrosion resistance, oxidation resistance, wear resistance, excellent service life.
- Adaptive to various kinds of processing equipment and parameters. Working effectively with little noise.
- We take your urgency seriously by providing high cost performance and fast delivery

### Comparison of cutting test results

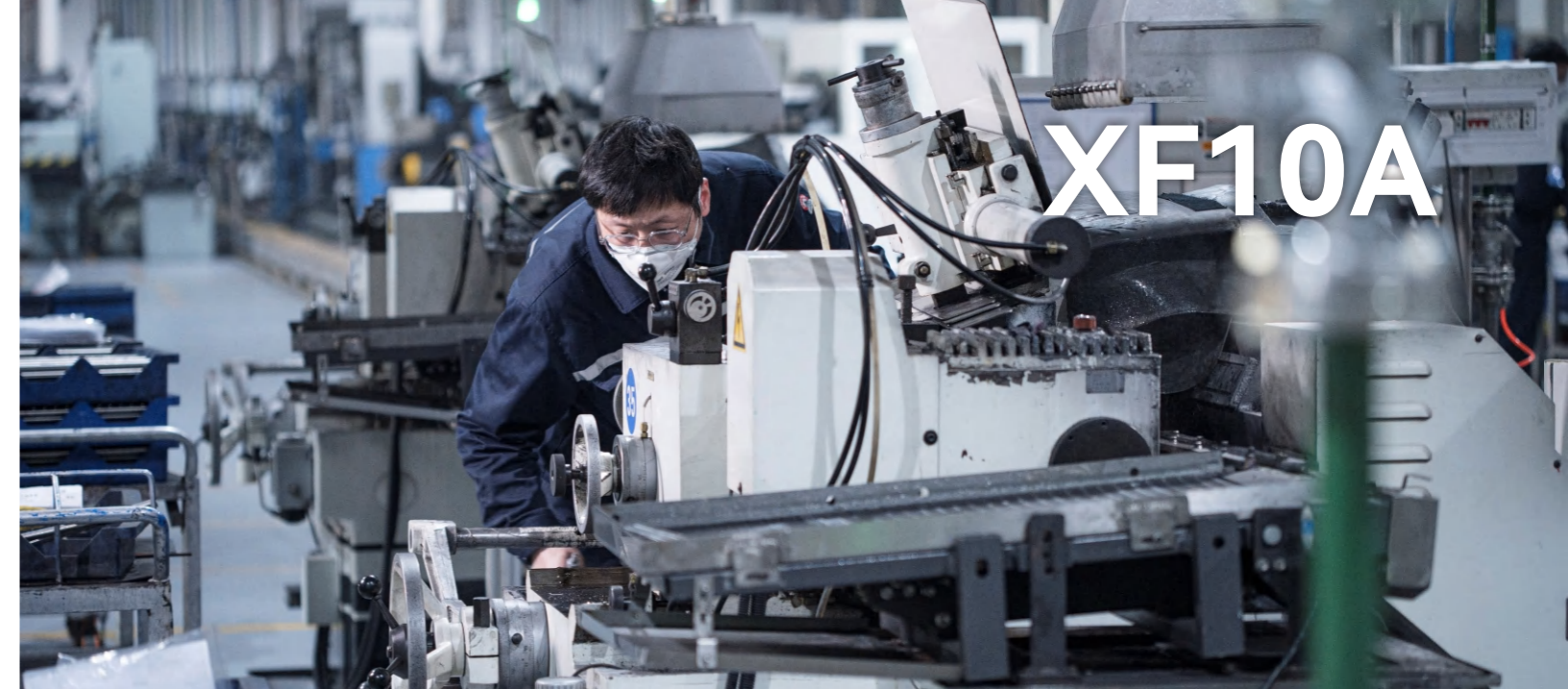
Processed material	Flakeboard	Cutting tool	Cutting knife	Test equipment	CNC engraving machine
--------------------	------------	--------------	---------------	----------------	-----------------------



ZCC XU10W



Another material for the same application

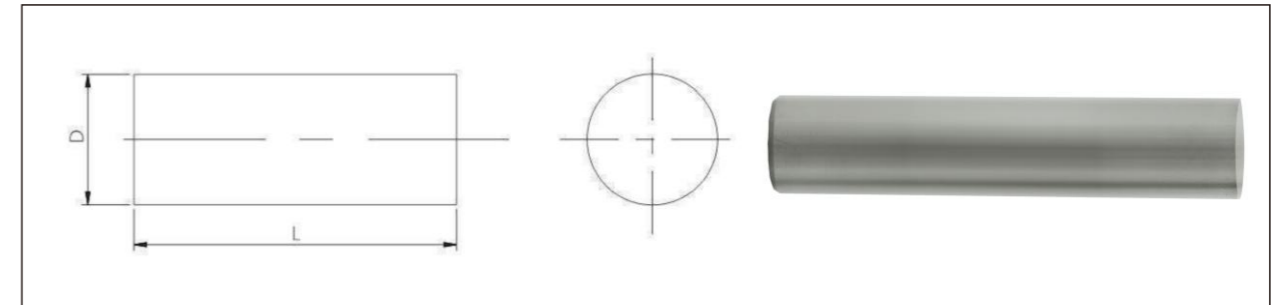


## BRINGING YOU AMAZING EXPERIENCE IN CUTTING SOLID WOOD MATERIALS

- Presenting reliable performance by effectively resisting corrosion of various natural components in solid wood.
- A perfect balance between hardness and toughness, with a stable life service.
- Suitable for sawing, edging, turning milling and other processing methods.

# WOOD WORKING ROD

# WOOD WORKING ROD



Diameter		Length		
D	Tolerance	L		Tolerance
0.5	+0.1/+0.2	310	330	0/+7
1.3	+0.1/+0.2	310	330	0/+7
2.3	+0.1/+0.25	310	330	0/+7
3.3	+0.1/+0.3	310	330	0/+7
4.3	+0.2/+0.4	310	330	0/+7
5.3	+0.2/+0.4	310	330	0/+7
6.3	+0.2/+0.4	310	330	0/+7
7.3	+0.2/+0.4	310	330	0/+7
8.3	+0.2/+0.4	310	330	0/+7
9.3	+0.2/+0.4	310	330	0/+7
10.3	+0.2/+0.4	310	330	0/+7
11.3	+0.2/+0.5	310	330	0/+7
12.3	+0.2/+0.5	310	330	0/+7
13.3	+0.2/+0.5	310	330	0/+7
14.3	+0.2/+0.5	310	330	0/+7
15.3	+0.2/+0.5	310	330	0/+7
16.3	+0.2/+0.5	310	330	0/+7
17.3	+0.2/+0.5	310	330	0/+7

mm

D < 18.3, L > 100, Tol. 0 ~ +7; L < 100, Tol. 0 ~ +5. D ≥ 18.3, Tol. +3 ~ +10.

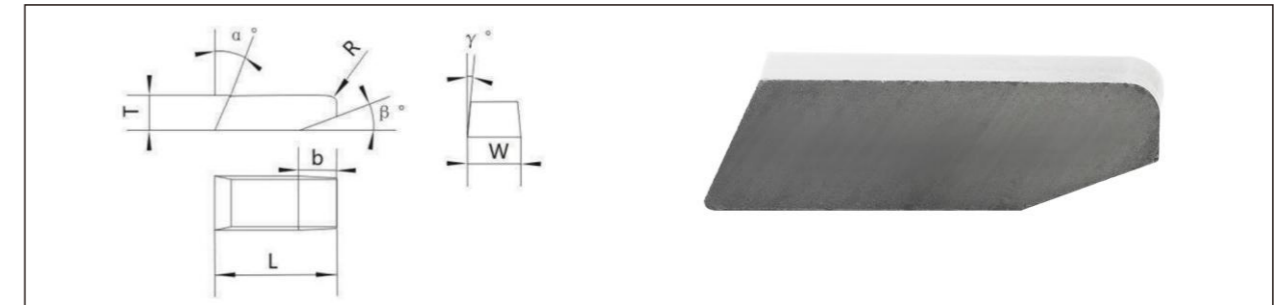
# WOOD WORKING SAWTOOTH

# WOOD WORKING SAWTOOTH

High dimensional accuracy

Good welding performance

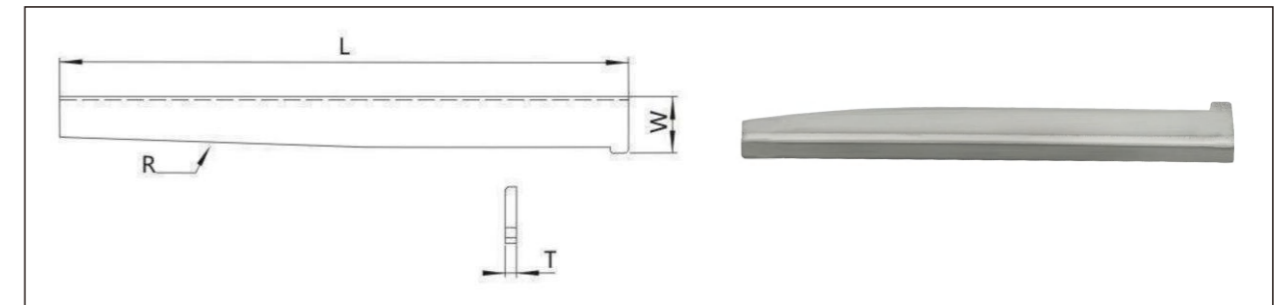
Customized inventory



Type	L	T	W	$\alpha^\circ$	$\beta^\circ$	b	R	$r^\circ$
ZA3219252010-W	3.2	1.9	1.8~4.0	25.0	20.0	10	0.5	0.0
ZA3520252710-W	3.5	2.0	1.8~4.0	25.0	27.0	1.0	0.5	0.0
ZA4020302710-W	4.0	2.0	1.8~4.0	30.0	27.0	1.0	0.5	0.0
ZA4520252710-W	4.5	2.0	1.8~4.0	25.0	27.0	1.0	0.5	0.0
ZA5518302513-W	5.5	1.8	2.0~5.0	30.0	25.0	1.3	0.5	0.0
ZA6035252020-W	6.0	3.5	2.0~5.0	25.0	20.0	2.0	0.5	0.0
ZA6520302422-W	6.5	2.0	2.0~5.0	30.0	24.0	2.2	0.5	0.0
ZA6820302016-W	6.8	2.0	2.0~5.0	30.0	20.0	1.6	0.8	0.0
ZA7020302521-W	7.0	2.0	2.0~5.0	30.0	25.0	2.1	0.8	0.0
ZA7525282027-W	7.5	2.5	2.0~5.0	28.0	20.0	2.7	0.8	0.0
ZA8023282027F-W	8.0	2.3	3.0~8.5	28.0	20.0	2.7	0.8	5.0
ZA8030252027F-W	8.0	3.0	3.0~8.5	25.0	20.0	2.7	0.8	5.0
ZA8525282030F-W	8.5	2.5	3.0~8.5	28.0	20.0	3.0	0.8	5.0
ZA8530282030F-W	8.5	3.0	3.0~8.5	28.0	20.0	3.0	0.8	5.0
ZA9025252032F-W	9.0	2.5	3.0~8.5	25.0	20.0	3.2	0.8	5.0
ZA9528252033F-W	9.5	2.8	3.0~8.5	25.0	20.0	3.3	0.8	5.0
ZA10025252535F-W	10.0	2.5	3.0~8.5	25.0	25.0	3.5	0.8	5.0
ZA10535252035F-W	10.5	3.5	3.0~8.5	35.0	20.0	3.5	0.8	5.0
ZA12035282036F-W	12.0	3.5	3.0~8.5	28.0	20.0	3.6	1.0	5.0
ZA12540282038F-W	12.5	4.0	3.0~8.5	28.0	20.0	3.8	1.0	5.0

# WOOD WORKING GRAVER

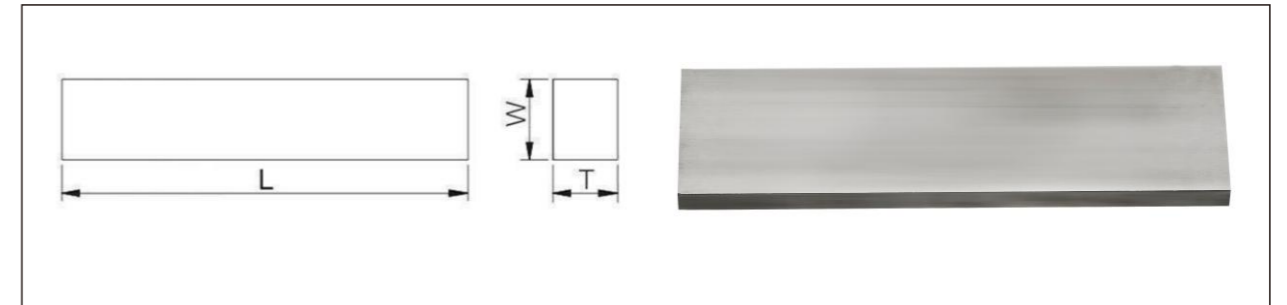
# WOOD WORKING GRAVER



Type	L	W	T	R
15X2.5XT	15.0	2.5	1~2	13.0
18X2.7XT	18.0	2.7	1~2	30.0
19X3.0XT	19.0	3.0	1~2	25.0
20.8X3.0XT	20.8	3.0	1~2	37.5
22X3.5XT	22.0	3.5	1~2	25.0
25X4.0XT	25.0	4.0	1~2	25.0
25.8x3.3XT	25.8	3.3	1~2	37.5
26X3.0XT	26.0	3.0	1~2	30.0
26X4.0XT	26.0	4.0	1~2	30.0
30x3.0XT	30.0	3.0	1~2	30.0
30X5.0XT	30.0	5.0	1~2	25.0
30.5X6.0XT	30.5	6.0	1~2	30.0
30.8x3.8XT	30.8	3.8	1~2	37.5
30.8X4.1XT	30.8	4.1	1~2	37.5
31X4.0XT	31.0	4.0	1~2	30.0
31X4.3XT	31.0	4.3	1~2	13.0
31.5X4.5XT	31.5	4.5	1~2	31.5
32.6x4.3XT	32.6	4.3	1~2	40.0
35X4.0XT	35.0	4.0	1~2	40.0
40.5X4.0XT	40.5	4.0	1~2	30.0

# WOOD WORKING STRIP

# WOOD WORKING STRIP

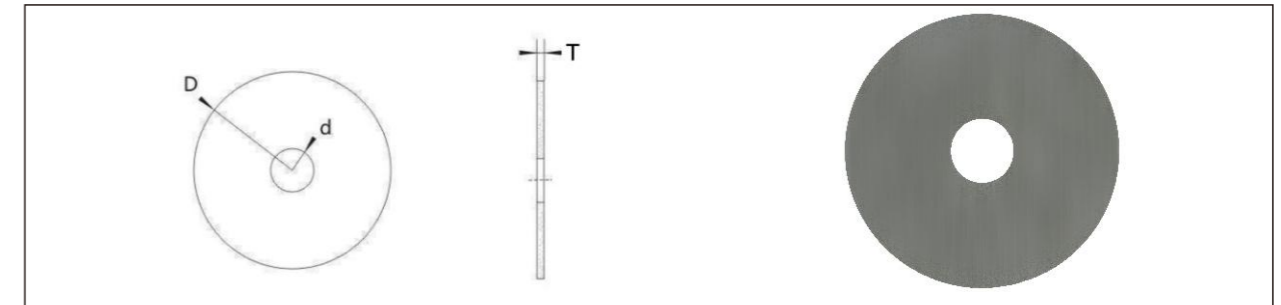


Size	Range	Tolerance
T	$2.0 \leq T \leq 36.0$	+0.15/+0.45
W	$2.0 \leq T \leq 36.0$	+0.2/+0.6
L	$260 \leq T \leq 700$	0/+10.0

mm

# DISC CUTTER

# DISC CUTTER



Type	D	d	T
D*d*T	10.0~70.0	5.0~20.0	0.5~5.0

mm





# APPENDIX

## MECHANICAL & PHYSICAL PROPERTIES OF CEMENTED CARBIDE

### 1. Hardness (ISO 3738 and ISO 3878)

The hardness of a material is its quality to withstand localized deformation. Rockwell hardness (unit: HRA) and Vickers hardness (unit: HV) tests are normally applied to cemented carbide. Due to different methods of measurement, the conversion of values from the above two tests should be based on the reference table of the tested materials.

### 2. Toughness / Fracture toughness

Toughness refers to the capacity of a material to resist fracture or crack propagation. Its depends on the composition, microstructure and other intrinsic factors of the material, and characterizes the comprehensive performance of a material.

### 3. Transverse rupture strength (ISO 3327)

Transverse rupture strength (TRS) is the ability of a material to resist bending. This value can be calculated with the Three Pin Fixture, used with a Hydraulic Press, to exert heavy pressure on a test piece. TRS is the average value of several tests. This value can vary considerably depending on the geometry and the surface condition of the specimen and the experimental equipment. In particular, this result is closely to surface smoothness, residual surface stress, surface corrosion and internal defects. It must be mentioned that the TRS value alone cannot be used as a criterion for grade selection.

### 4. Density (ISO 3369)

Density is commonly used in the cemented carbide industry to determine the accuracy of a grade's composition. The density of carbide is determined according to ISO 3369 and varies strongly depending on the composition of the carbide grade. The density of tungsten carbide (WC) is 15.7 g/cm<sup>3</sup> and the density of cobalt (Co) is 8.9 g/cm<sup>3</sup>. Therefore, for the WC-Co grade, the density decreases as the cobalt content increases.

### 5. Others

#### Straightness

Straightness indicates the condition where actual straight elements of a part lies in a ideal straight line. Straightness tolerance is the maximum deflection allowed for an actual line to an ideal straight line.

#### Roudness

Roundness is defined as the closeness of a cross-section through that part to an ideal circler. Roundness tolerance is the maximum deflection allowed for an actual circle to an ideal circle in the same cross-s ection.

#### Concentricity

Concentricity indicates the condition of how well the measured circle center conforms the reference circle center. Concentricity tolerance is the maximum deflection allowed for the measured actual circle center to the reference circle center.

#### Circular run-out

Circular run-out indicates how well a circular cross-section of a part stands in a fixed position with respect to the datum axis. Circular run-out tolerance is the maximum allowable deflection in a circular feature when the part rotates about the true datum axis.



# SOCIAL RESPONSIBILITY

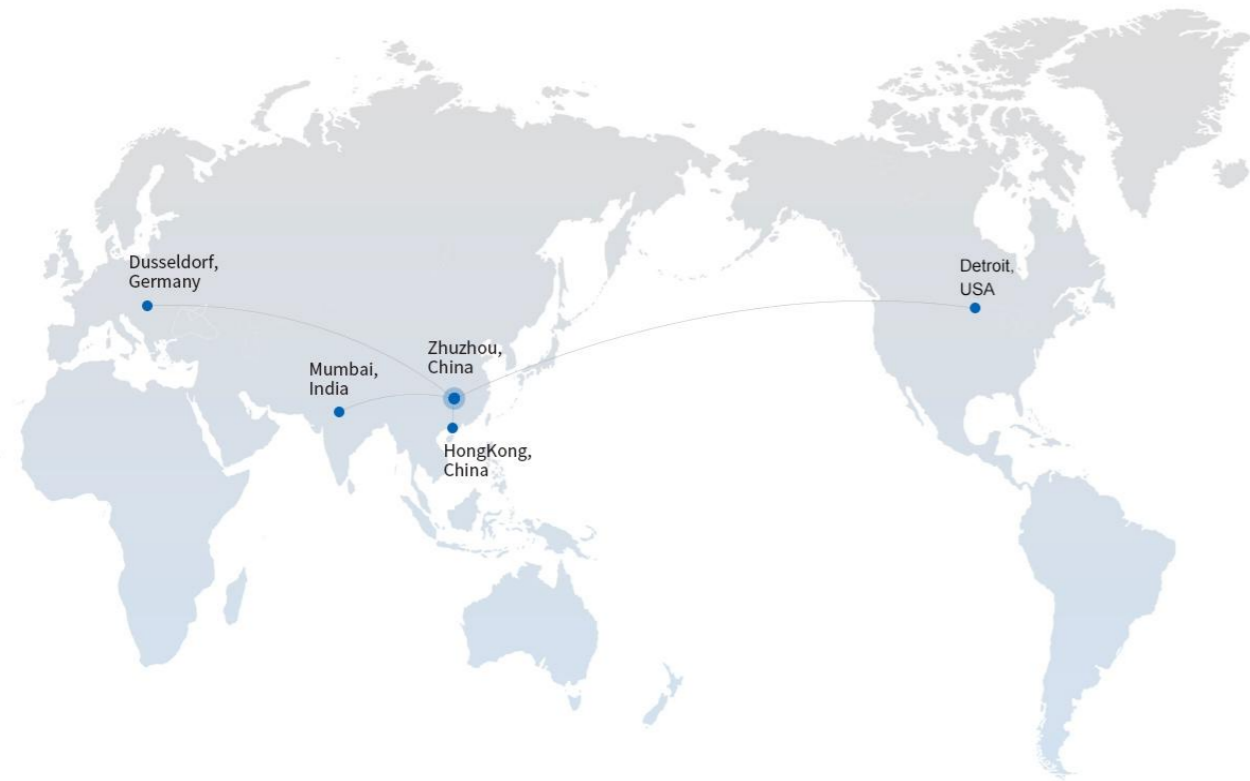
Bearing in mind the 30·60 goal and dual circulation development paradigm, ZCC explores new standards, technologies, new energy, green and digital technologies, and other fields and makes multiple sectors go intelligent, efficient, green, and low carbon to create a better life and contribute to China's high quality and sustainable development.

Zhuzhou Cemented Carbide Group Co., Ltd. has been once again recognized as an environmental credit and integrity enterprise in Hunan Province.

In accordance with people-orientated management philosophy, ZCC empowers the staff, provides quality service for customers and makes contributions to building a harmonious society. ZCC is dedicated to the development of staff, enterprise and society.

Aimed at becoming an environmental-friendly enterprise, ZCC implemented clean production and promoted environmental protection by eliminating its energy-intensive production lines and introducing new technologies, new processes and new energy resources. In May 2011, the natural gas boiler system went into operation, and the last two chimneys were removed.

# WORLDWIDE SALES NETWORK



Zhuzhou Cemented Carbide Works Imp. & Exp. Co.(ZCCC) is the international trade organization under ZCC group. ZCCC has five overseas branches in USA, Europe, India, Japan, South Korea and HongKong China. In order to shorten delivery and facilitate customers at closer range, large volume of standardized rods are stocked in Ann Arbor, USA and Dusseldorf, Germany, enabling prompt order response and deliveries of most popular rods within 48 hours to our customers in North America and European countries.

## U.S.A

**Zhuzhou Cemented Carbide Works USA Inc.**  
4651 Platt Lane Ann Arbor, MI 48108, USA.

TEL: +1-734-302-0125  
FAX: +1-734-302-0126  
EMAIL: [info@zccamerica.com](mailto:info@zccamerica.com)

## Europe

**ZCC Europe GmbH**

## HongKong

**Zhuzhou Cemented Carbide Group HongKong Co.,Ltd.**