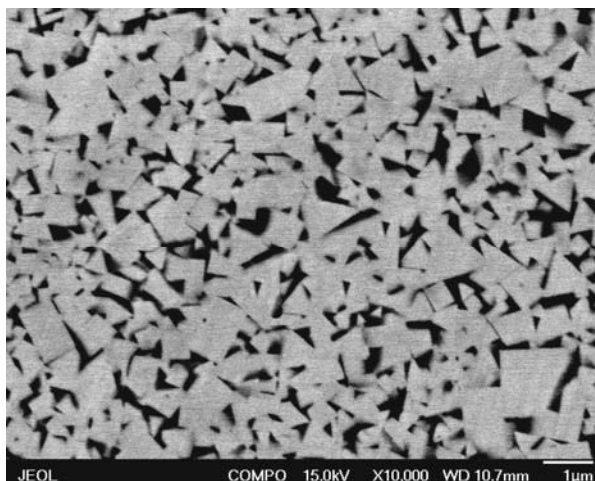




ZCC XF20T

Chemical Content (Wt/Wt %)

Co	10%
WC+Other carbides	Balance



Physical and mechanical properties

Density(g/cm ³)	ISO3369	14.45±0.05
Hardness HV30	ISO3878	1650(typical) / 1600 (Min)
HRA		91.7(typical) / 91.5 (Min)
$4 \pi \sigma$ (μ Tm ³ /kg)		17.0±1.2
HC(KA/m)	ISO3326	23.0±3.0
TRS(N/mm ²)	ISO3327	Sample B: 3300 (typical) / 3000 (Min)
K _{ic} (Mpa.m ^{1/2})		15.40

Micro Structure

Micro porosity	ISO4505
A (<10 μ m)	: ≤02
B (10-25 μ m)	: ≤00
C	: ≤00

Grain Size (micron)	ISO 4499 :	0.6um
η phase	ISO 4499 :	E00

Applications:

Popular grade for the machining of common steel, cast iron, heat-treated steel, specially for steel parts with hardness HRC≤40.