

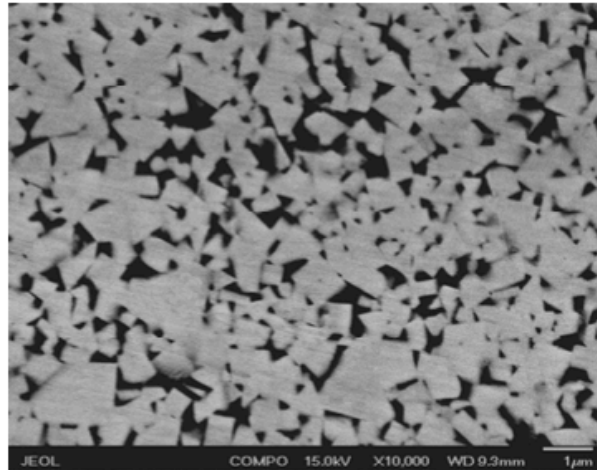


ZCC YL10.2

salesdepartment@zccamerica.com

Chemical Content (Wt/Wt %)

Co	10%
WC+Other carbides	Balance



Physical and mechanical properties

Density(g/cm ³)	ISO3369	14.45±0.05
Hardness HV30	ISO3878	1600 (typical) / 1550 (Min)
HRA		91.5 (typical) / 91.0 (Min)
4 π σ (μ Tm ³ /kg)		17.0±1.2
HC(KA/m)	ISO3326	20.5±2.0
TRS(N/mm ²)	ISO3327	Sample B: 3300 (typical) /3000 (Min)
K _{ic} (Mpa.m ^{1/2})		14.60

Micro Structure

Micro porosity	ISO4505
A (<10 μ m)	: ≤02
B (10-25 μ m)	: ≤00
C	: ≤00

Grain Size (micron)	ISO 4499 :	0.8um
η phase	ISO 4499 :	E00

Applications:

Popular grade for the machining of general materials such as common steel ,cast iron ,stainless steel etc.