



GRADE OVERVIEW

GRADE OVERVIEW(For Cutting Tools)									
CHEMICAL COMPOSITION			PHYSICAL PROPERTIES						
GRADE	WC+ others	Co	GRAIN SIZE (μm)	HARDNESS (HV30)	HARDNESS (HRA)	TRS (N/mm^2) (Sample C)	TRS (KPSI)	DENSITY (g/cm^3)	Fracture Toughness KIC $\text{Mpa}\cdot\text{m}^{1/2}$
XN108	92.00%	8%	0.2	2100	94.6	4500	652.5	14.46	10.50
XU30	88.00%	12%	0.4	1750	92.5	4000	580	14.1	15.20
YF06	94.00%	6%	0.6	1850	93.1	3600	522	14.9	9.17
XF20T	90.00%	10%	0.6	1650	91.7	3800	551	14.45	15.40
XF30	88.00%	12%	0.6	1700	92.3	4000	580	14.1	13.26
YL10.2	90.00%	10%	0.8	1600	91.5	4000	580	14.42	14.60
YL10A	92.00%	8%	0.8	1780	92.8	3800	551	14.65	10.74

CEMENTED CARBIDE ROD



GRADE YL10.2

Co(%) : 10
WC(%) : 89

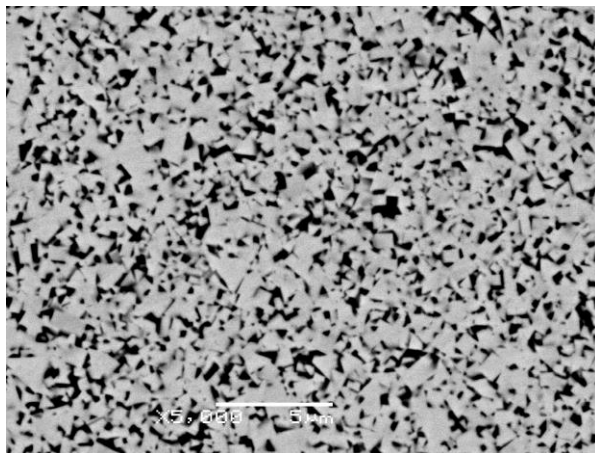
Physics Performance:

Density(g/cm³) : 14.45 ±0.05
Hardness HV30 : 1600 ±50
4 π σ μ Tm³ / kg : 18.2 ±1.5
HC(KA/m) : 20.5 ±2.5
TRS(N/mm²) : >4000

Porosity:

A: ≤02
B:00
C:00

Grain Size :0.8um



YL10.2 x5000